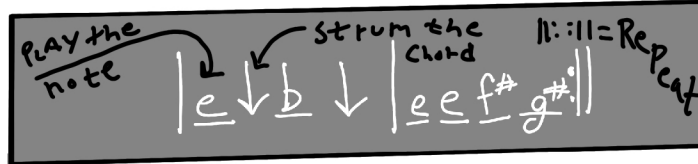


Common Bass Walks for Guitar

with
Alternating
Bass Strum

in 4/4 time



A to D and Back to A

||: a ↓ e ↓ | a a b c[#] | d ↓ a ↓ | d d c[#] b :||

A to E and Back to A

||: a ↓ e ↓ | a a g[#] f[#]

C to F and Back to C

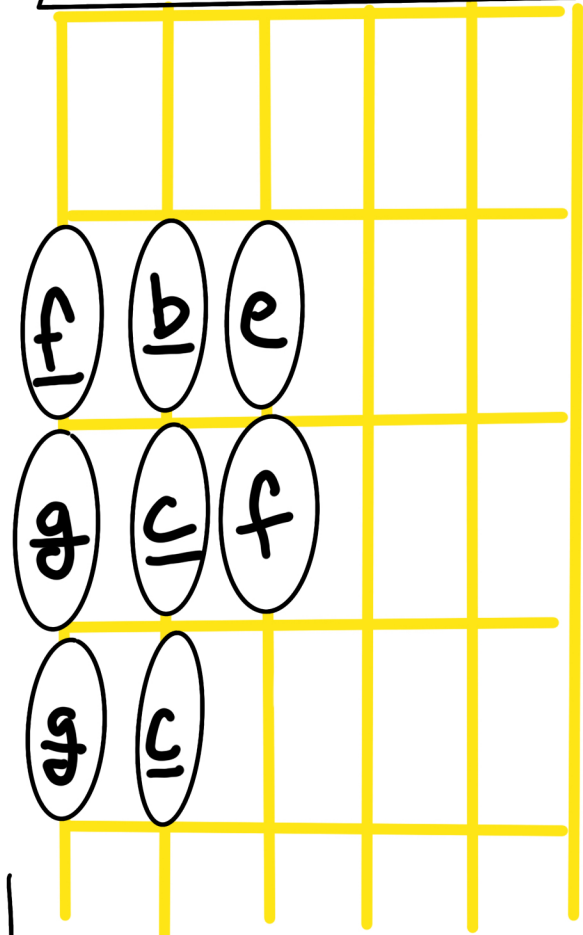
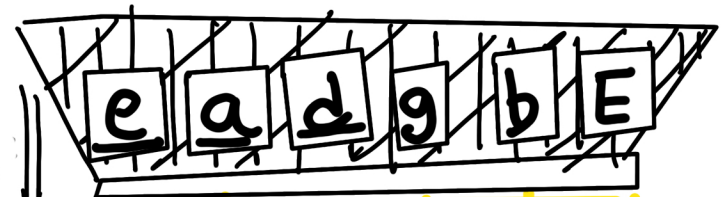
||: c ↓ g ↓ | c c d e | f ↓ c ↓ | f f e d :||

G to C and Back to G

||: g ↓ d ↓ | g g a b | c ↓ g ↓ | c c b a :||

G to D and Back to G

||: g ↓ d ↓ | g a b c | d ↓ a ↓ | d c b a :||



Illustrations by
Jason McInnes 2022
gettingtoknowtrees.com